



expert in
sports hall
development

ST HELEN AND ST KATHARINE SCHOOL

PROJECT OVERVIEW



“When we first decided to proceed with Ball Hall, we were nervous that the architectural quality and historic context of our existing building may not be maintained. We need not have been concerned as they guided us through the whole process. The project was a success and we are delighted with our new building.”

DAVID ELEY, BURSAR — ST HELEN AND ST KATHARINE SCHOOL, ABINGDON



expert in
sports hall
development

ST HELEN AND ST KATHARINE SCHOOL

Six badminton court sports hall including a gym equipped with a comprehensive and state-of-the-art range of cardio, strength, functional and group equipment.

COST

£2.7m

excl VAT

LOCATION

Abingdon

Oxfordshire

OPENED

Sep 2016



FACILITIES AT ST HELEN AND ST KATHARINE SCHOOL



SPORTS
EQUIPMENT



FITNESS
SUITE



CHANGING ROOMS
& TOILETS



SPORTS
FLOORING



expert in
sports hall
development

PROJECT CHALLENGES

We have faced a variety of challenges throughout our time developing sports halls. Each project generally presents its own set of complications, sometimes relating to existing structures, surrounding areas or site conditions and in other cases, it's purely about budget, keeping numerous funding partners happy, or meeting a deadline.

This was an extension to an existing inadequate sports facility that had to remain in full use throughout the development.

The building itself was in the grounds of the original school buildings which date from 1906, making this a site of historical importance and therefore sensitive consideration of heritage and conservation were essential.





expert in
sports hall
development

PROJECT SOLUTION

Each unique set of circumstances, is thought about and considered, in depth, by Ball Hall at the outset of the project. We bring all of our previous experience and expertise to the fore and try where possible, to apply a combination of creative and pragmatic thinking to problem solve in each case.

Linked to the current sports building this sport and fitness centre provides outstanding facilities including a fitness suite with equipment that offers flexible training possibilities.

Our Ball Hall concept design allowed for access points to the current facility to be maintained for the duration of the project. Sports activity continued and the safe management of the school remained uninterrupted throughout.

A heritage statement was prepared as part of our process which meant materials took sympathy from the exiting buildings and the rest of the school.





expert in
sports hall
development

BALL HALL ADDED VALUE

With all the difficulties of a project considered upfront and contingency built in for unforeseen events or conditions, Ball Hall deliver outstanding buildings for sport. A Ball Hall Sports Hall often exceeds expectation and consistently becomes a flag waving celebration for the organisation, with many further benefits that materialise over time.

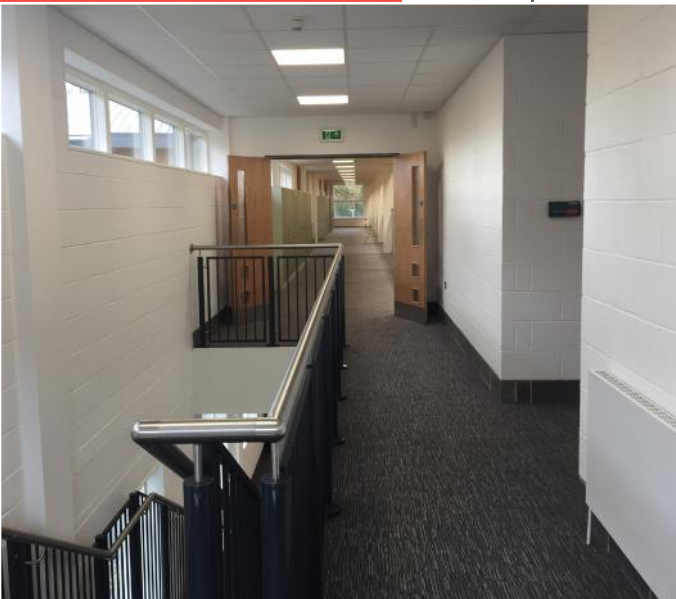
As a protocol, we addressed the health and safety report as our first concern at every meeting. A culture developed amongst our contractors and subcontractors where safety and normal operation were promoted as priorities.

Our client had an understanding of how the buildings should look and be built, but was unfamiliar with the latest thinking in sport facilities.

Ball hall were able to bring our sport expertise and provide options to meet all abilities and use all exercise techniques, from traditional fitness workouts to resistance training practiced by elite sports people.

This transformation has contributed to the school being ranked in the top 6 girls' schools for sport in the country.





01664 567 542
info@ballhall.co.uk
ballhall.co.uk



expert in
sports hall
development